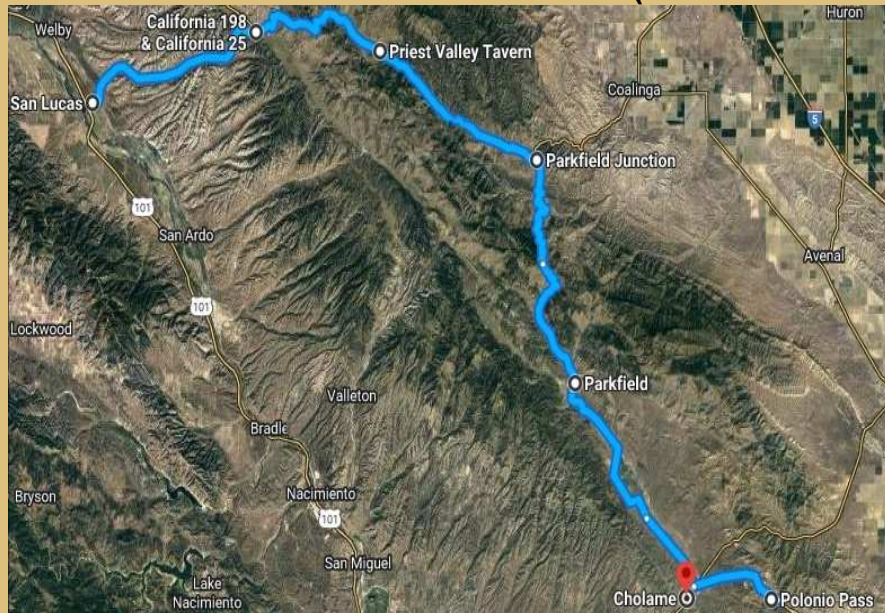


Routes Across the Southern Diablo Range

CA 198 – San Lucas to Coalinga



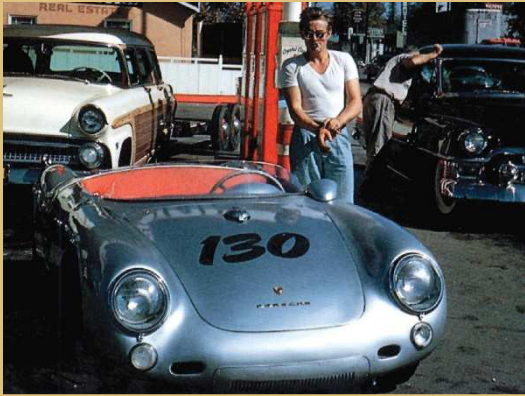
Via Parkfield thru Polonio Pass – from San Lucas (or CA 25 east Pinnacles NP)



CA 41 - Cholame to Kettleman City or CA 46 - Paso Robles to Lost Hills



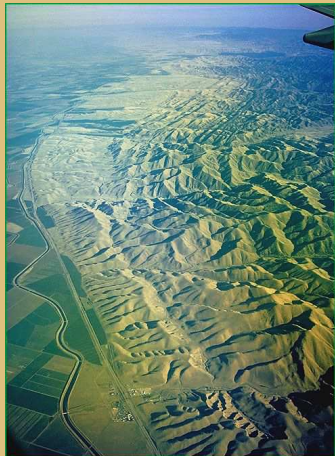
Note: James Dean took the lower route from Blackwell's Corner toward Cholame



Porsche 550 Spyder, Blackwells Corner



CA 41 & CA 46 Crash Site - Now & Then (1955)



Kettleman Hills



Lost Hills – Oil Derricks



Priest Valley



CA-198

Priest Valley Tavern



Parkfield – San Andreas Fault – Parkfield Cafe

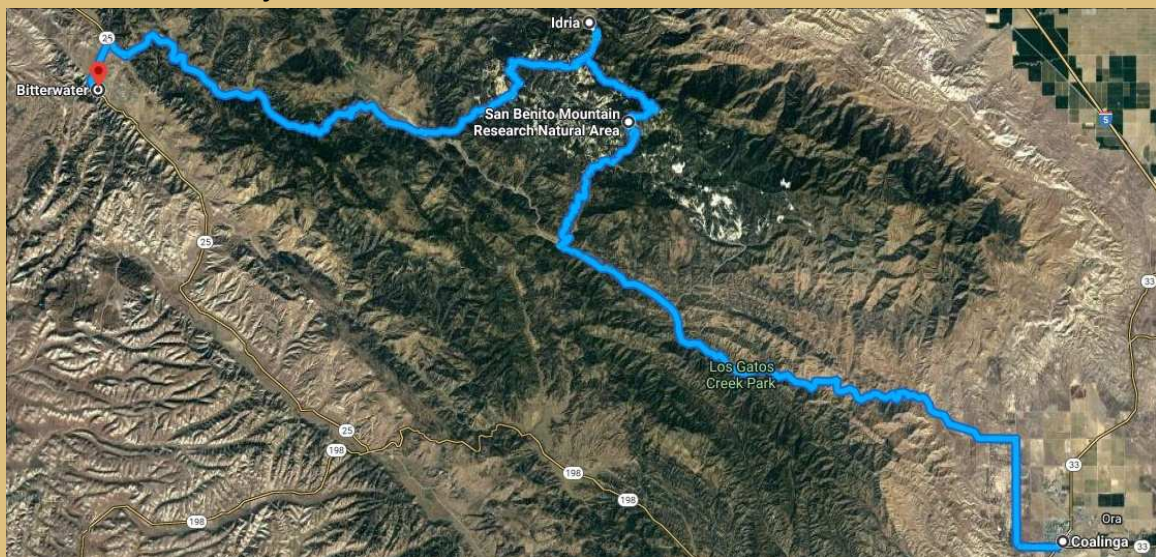


Polonio Pass



Antelope Grade (1998)

Now... I'm not sure this last route 'counts'. You take Los Gatos Creek Road out of Coalinga, check out San Benito Mountain Natural Research Area and the old mining town of Idria... and finally come out on CA 25 at Bitterwater south of Pinnacles NP.



San Benito Mountains – Highest Point in the Diablo Mountain Range



Idria (or New Idria) was a quicksilver mining town – panorama view